

Installing AgCam Cameras On A Lexion Proficam System

Locate the Proficam junction box underneath the cab of the combine.



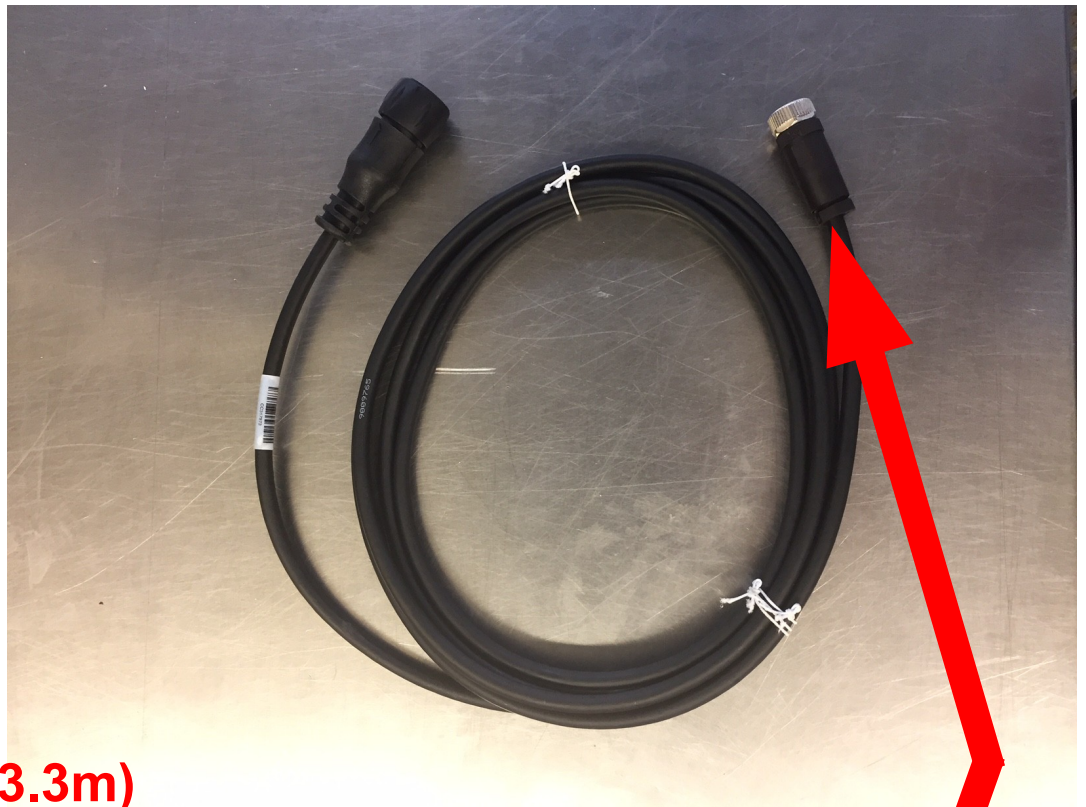
Plug in the Claas 5 pin/10 pin cable into one of the open ports on the junction box.



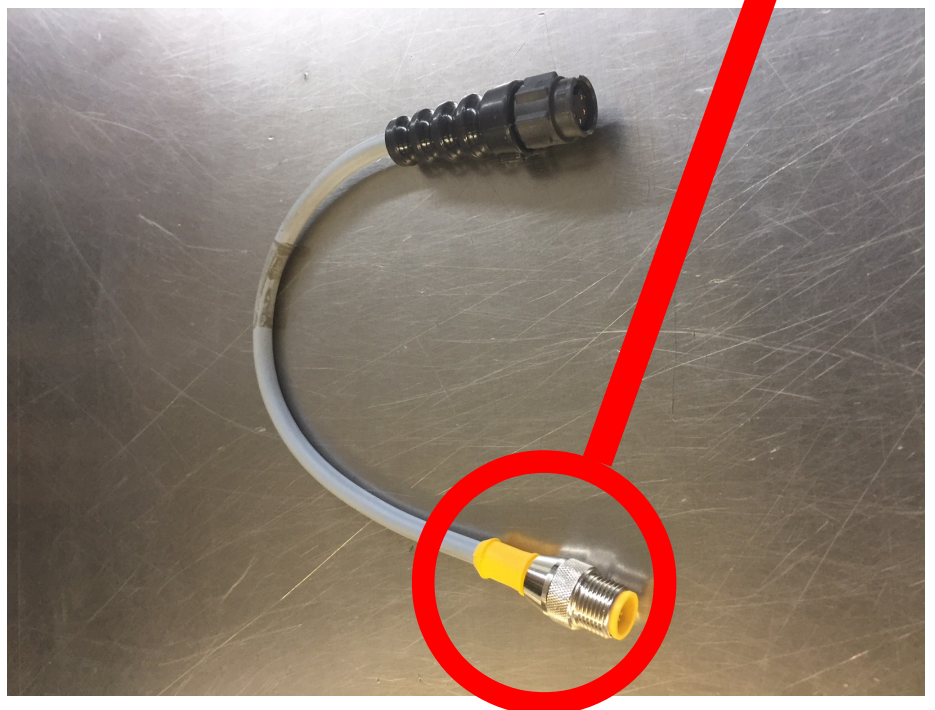
PN: 0170371 (3.3m)
PN: 0170081 (10.5m)



Plug in the AgCam adaptor cable into the other end of the Claas 5 pin/10 pin cable.



PN: 0170371 (3.3m)
PN: 0170081 (10.5m)



PN: DMAC-CLS

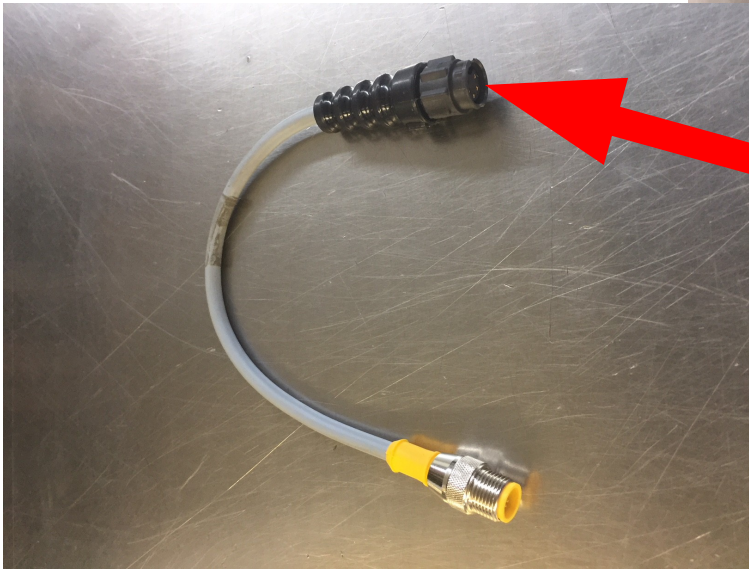


Plug in the extension harness from the AgCam Camera Kit into the other end of the adaptor cable and route to the desired mounting location.

PN: AC-C1 (Single Camera Kit)

PN: AC-C1-A2C (Double Camera Kit)

PN: AC-RC (Camera Only)



Plug in the AgCam camera cable into the other end of the extension cable and the other end of the camera cable into the back of the camera.



Turn on your machine and you should now receive a video feed from the new camera into the Proficam monitor.



306-864-1700
www.agauthority.ca
parts@agauthority.ca